

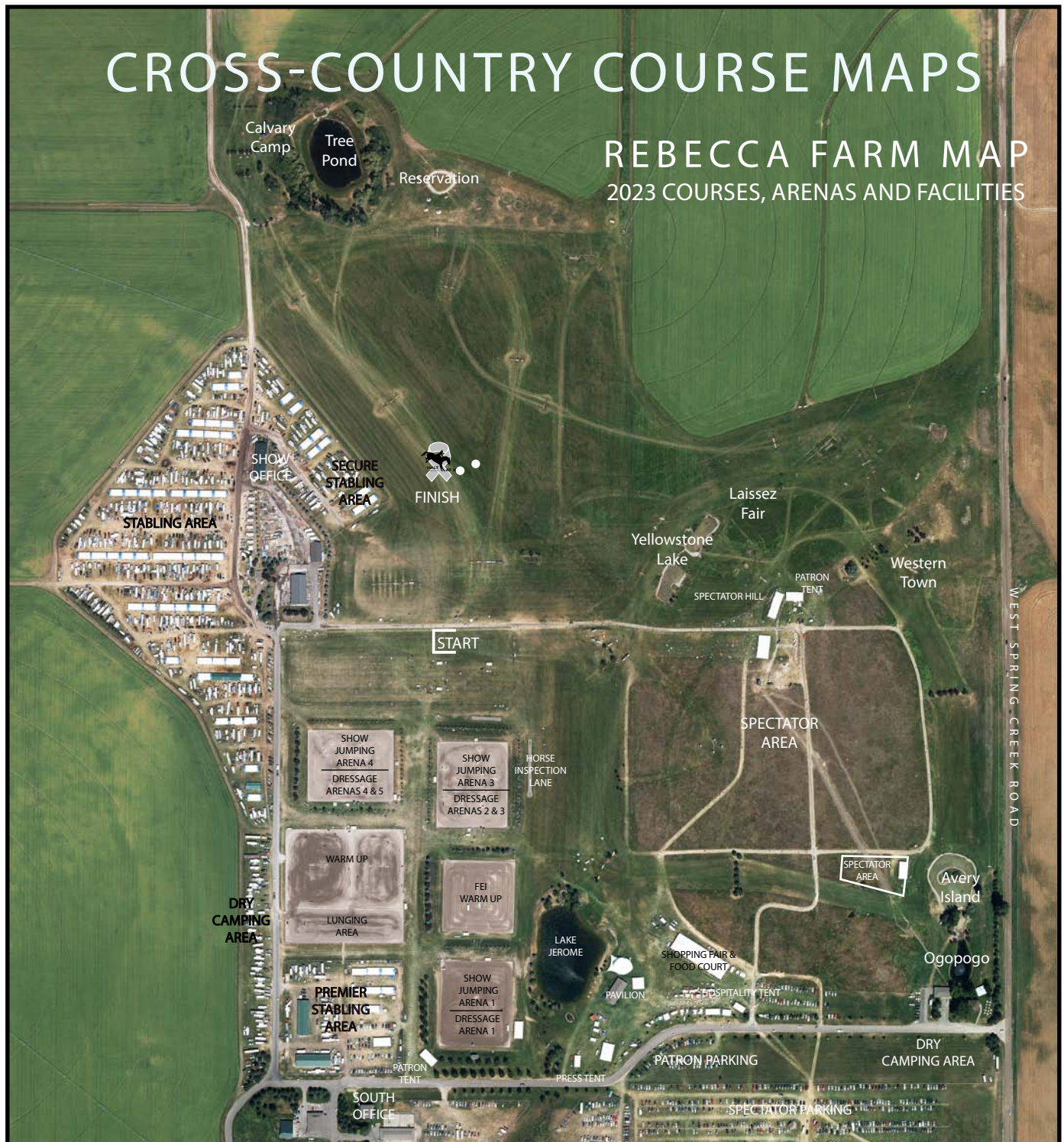


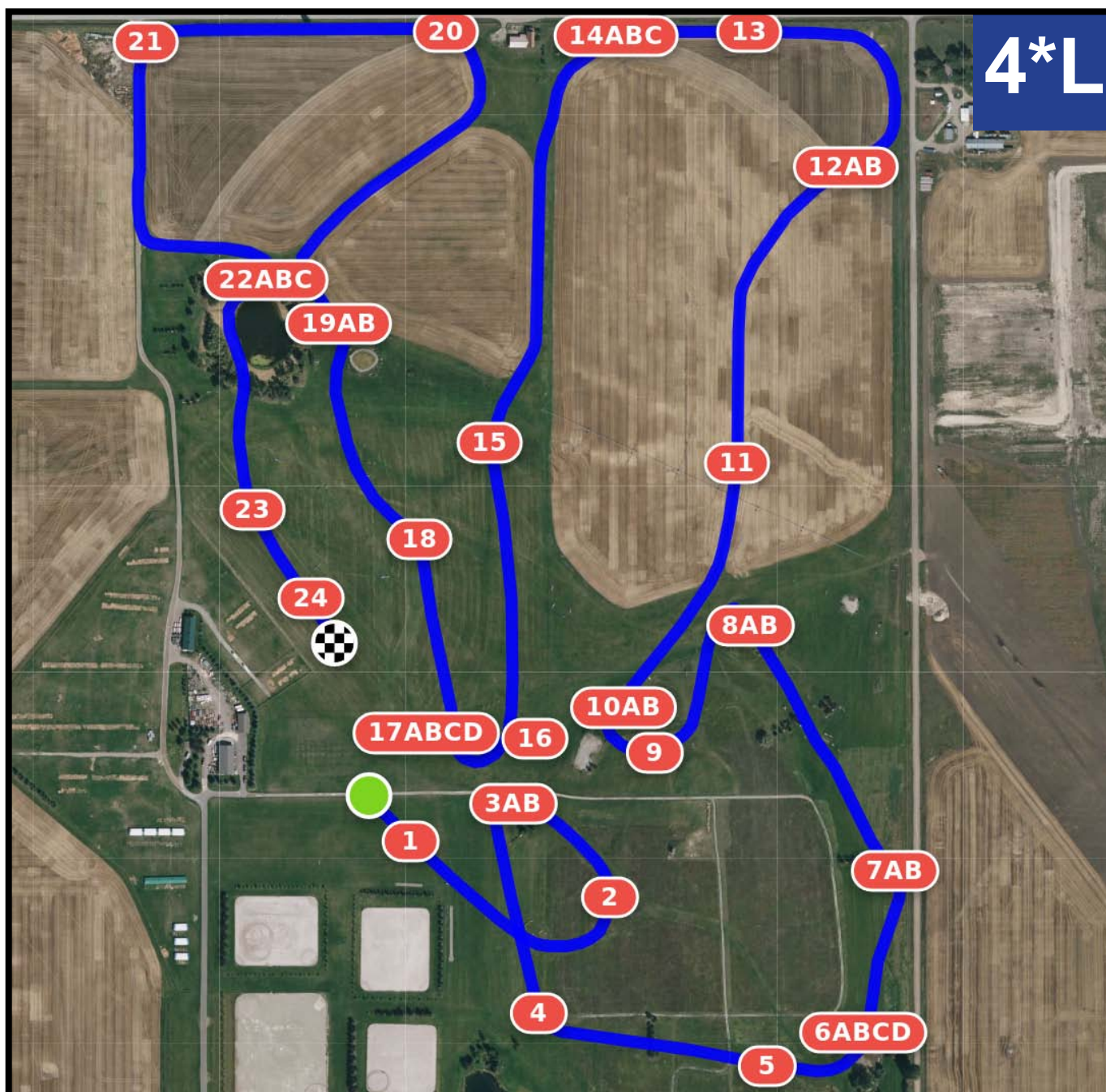
THE EVENT

AT REBECCA FARM

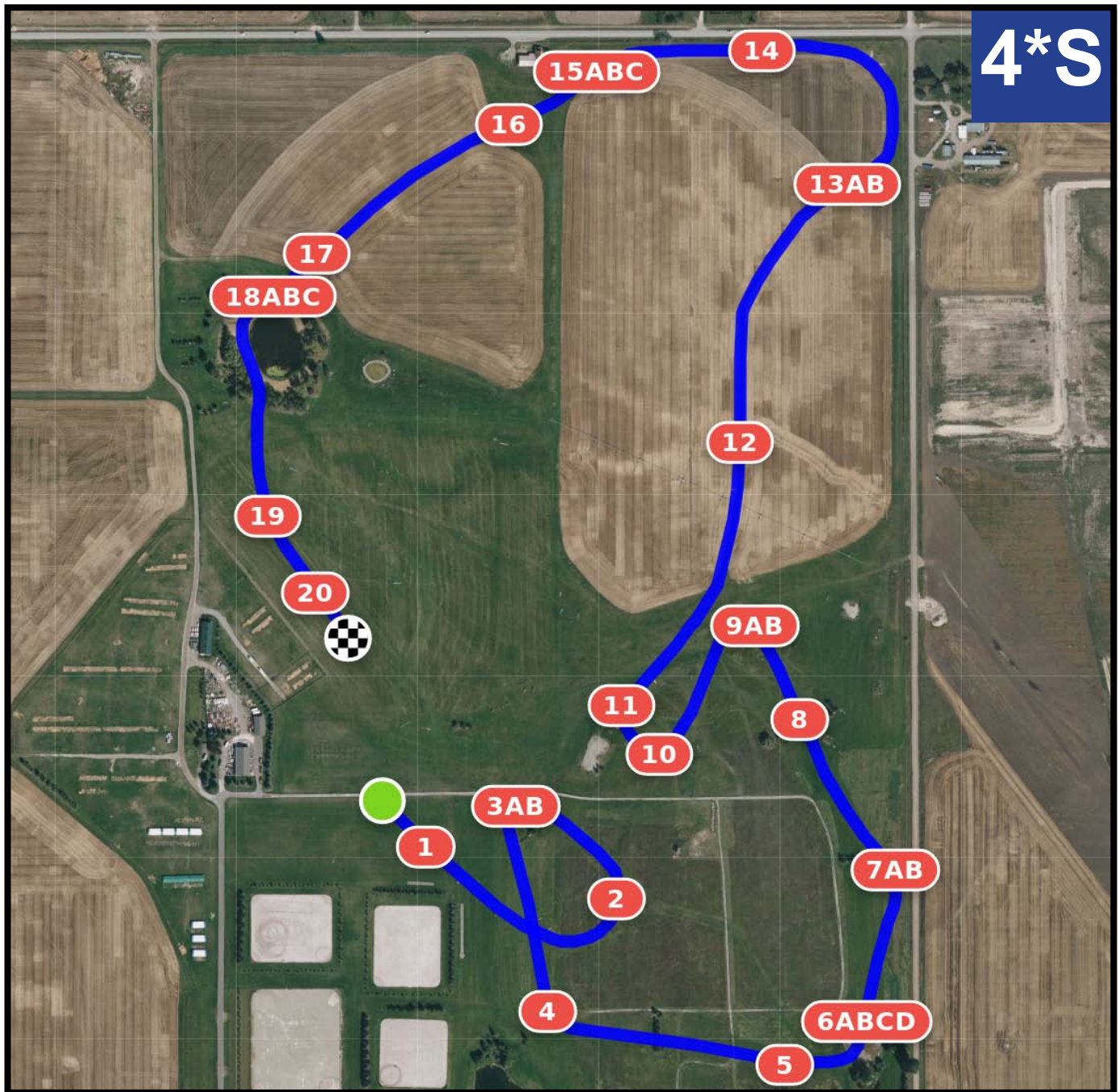
CROSS-COUNTRY COURSE MAPS

REBECCA FARM MAP 2023 COURSES, ARENAS AND FACILITIES





- | | | | |
|-------|------------------------------------|--------|-----------------------------------|
| 1 | Train | 13 | Lincoln Logs |
| 2 | American Flag Ramp | 14abc | Coffin |
| 3ab | Log Pile to Brush | 15 | Ditch Brush |
| 4 | Wagon | 16 | Bunker |
| 5 | Mulch Oxer | 17abcd | Moose Bounces |
| 6abcd | Snake, Bounce Logs to Triple Brush | 18 | Table |
| 7ab | Narrow Table to Honey Bear Table | 19ab | Barns |
| 8ab | Brush Corners | 20 | Mountain Table |
| 9 | Water Pipe | 21 | Fort |
| 10ab | Viaducts | 22abc | Duck, Duck Rail to Rolled Chevron |
| 11 | Cutout Bunker | 23 | Brush Oxer |
| 12ab | Brush Oxer to Corner | 24 | Farm Trailer |

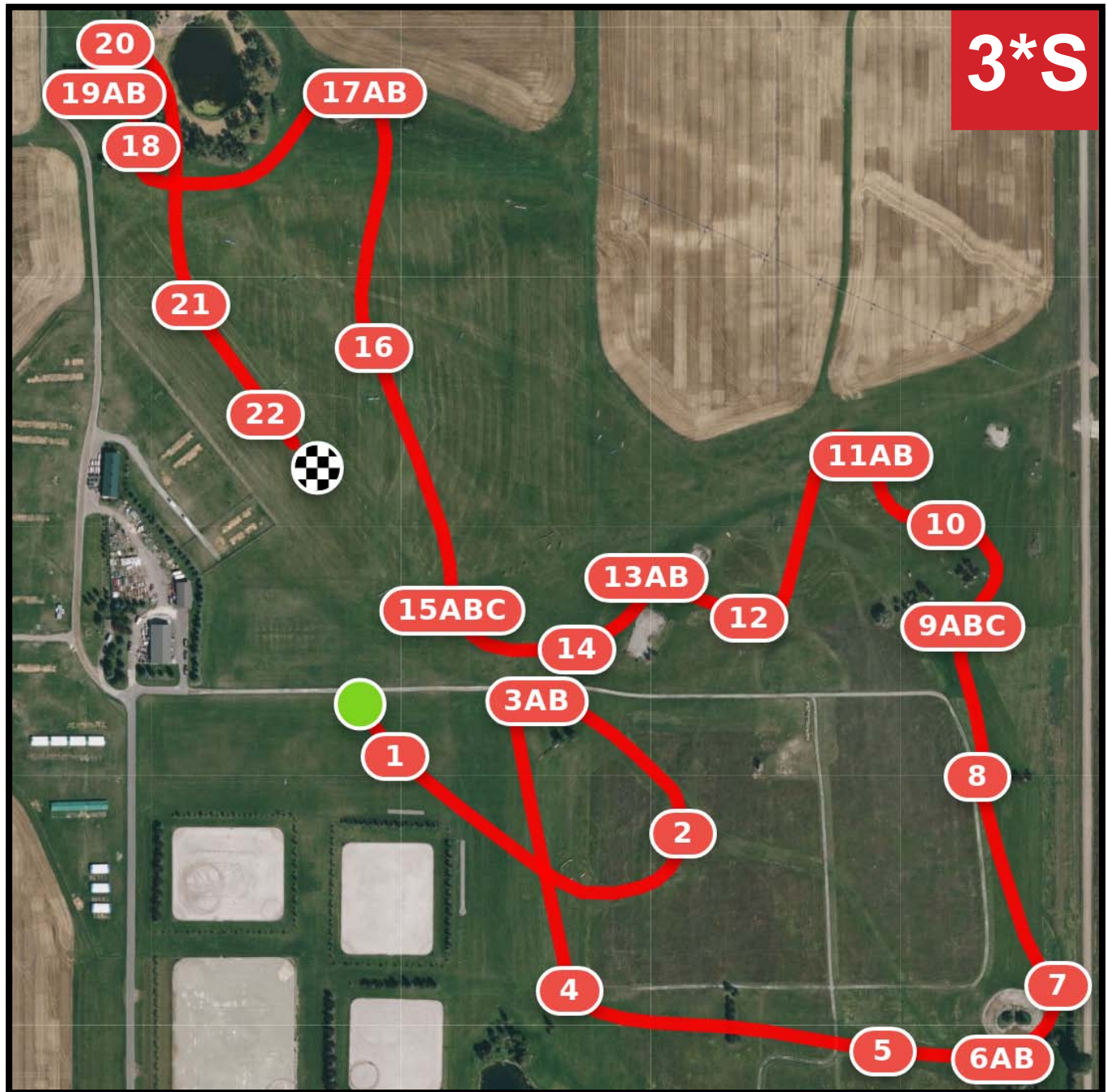


- 1 Train
- 2 American Flag Ramp
- 3ab Log Pile to Brush
- 4 Wagon
- 5 Mulch Oxer
- 6abcd Gator, Gator Bait, Hanging Log to Triple Brush
- 7ab Narrow Table to Honey Bear Table
- 8 Feeder
- 9ab Brush Corners
- 10 Water Pipe

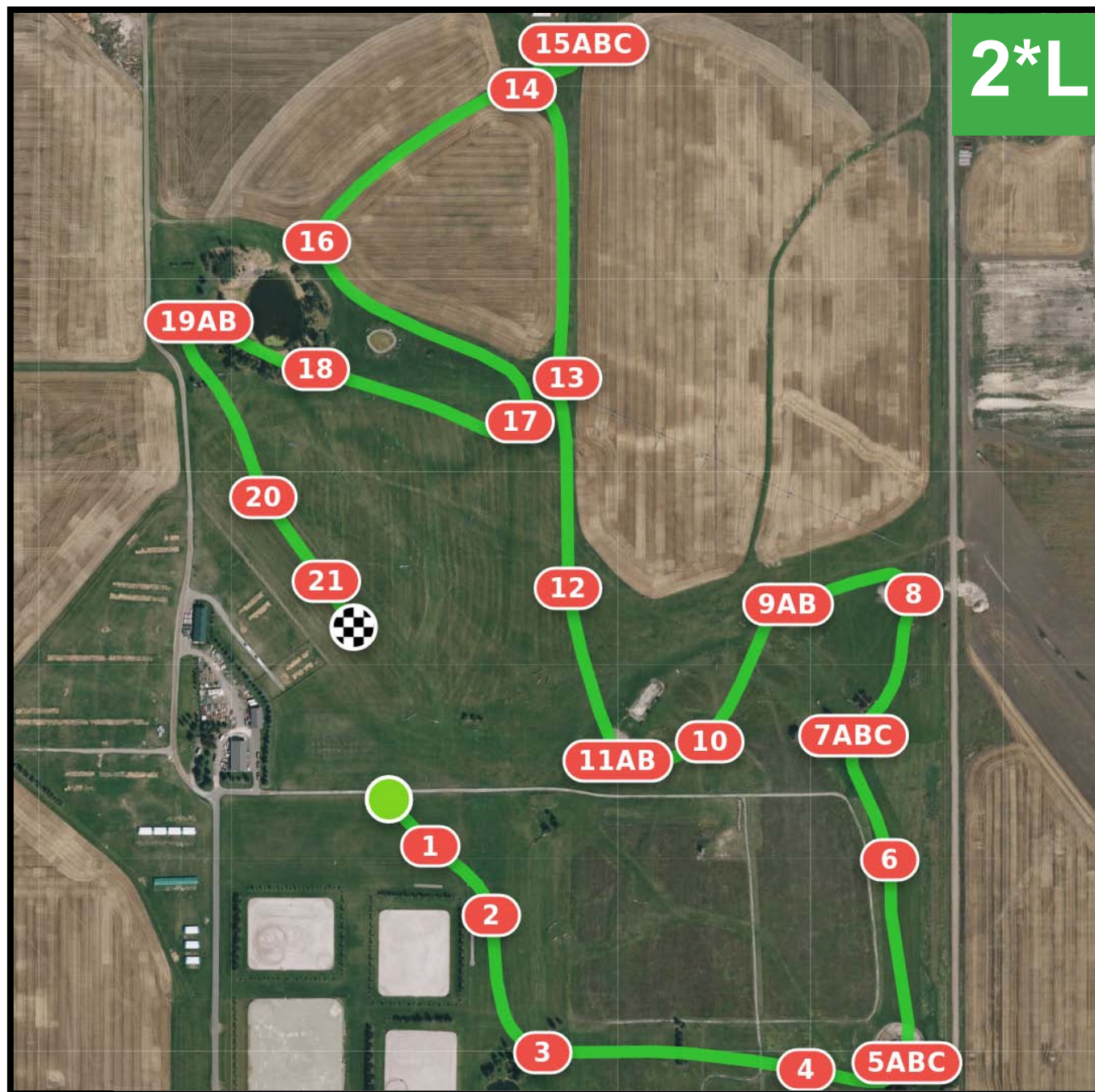
- 11 Viaduct
- 12 Bunker
- 13ab Brush Oxer to Corner
- 14 Lincoln Logs
- 15abc Coffin
- 16 Roll Top
- 17 Narrow Brush Oxer
- 18abc Duck, Duck Rail to Rolled Chevron
- 19 Brush Oxer
- 20 Farm Trailer



- | | | | |
|------|-----------------------------|-------|--------------------------------|
| 1 | Train | 13abc | Coffin |
| 2 | Canadian Flag Ramp | 14 | Narrow Ditch Brush |
| 3ab | Log Pile to Brush | 15 | Fruit Stand |
| 4 | Wagon | 16ab | Log Drop into Water to Viaduct |
| 5 | Mulch Oxer | 17 | Viaduct |
| 6ab | Gator to Gator Bait | 18abc | Sunken Road |
| 7ab | Hanging Log to Triple Brush | 19 | Table |
| 8 | Honey Bear Table | 20 | Hanging Log |
| 9ab | Brush Corners | 21ab | Smiley Brush to Hedge Table |
| 10 | Bunker | 22 | Narrow Table |
| 11ab | Brush Oxer to Corner | 23 | Brush Oxer |
| 12 | Lincoln Logs | 24 | Farm Truck |

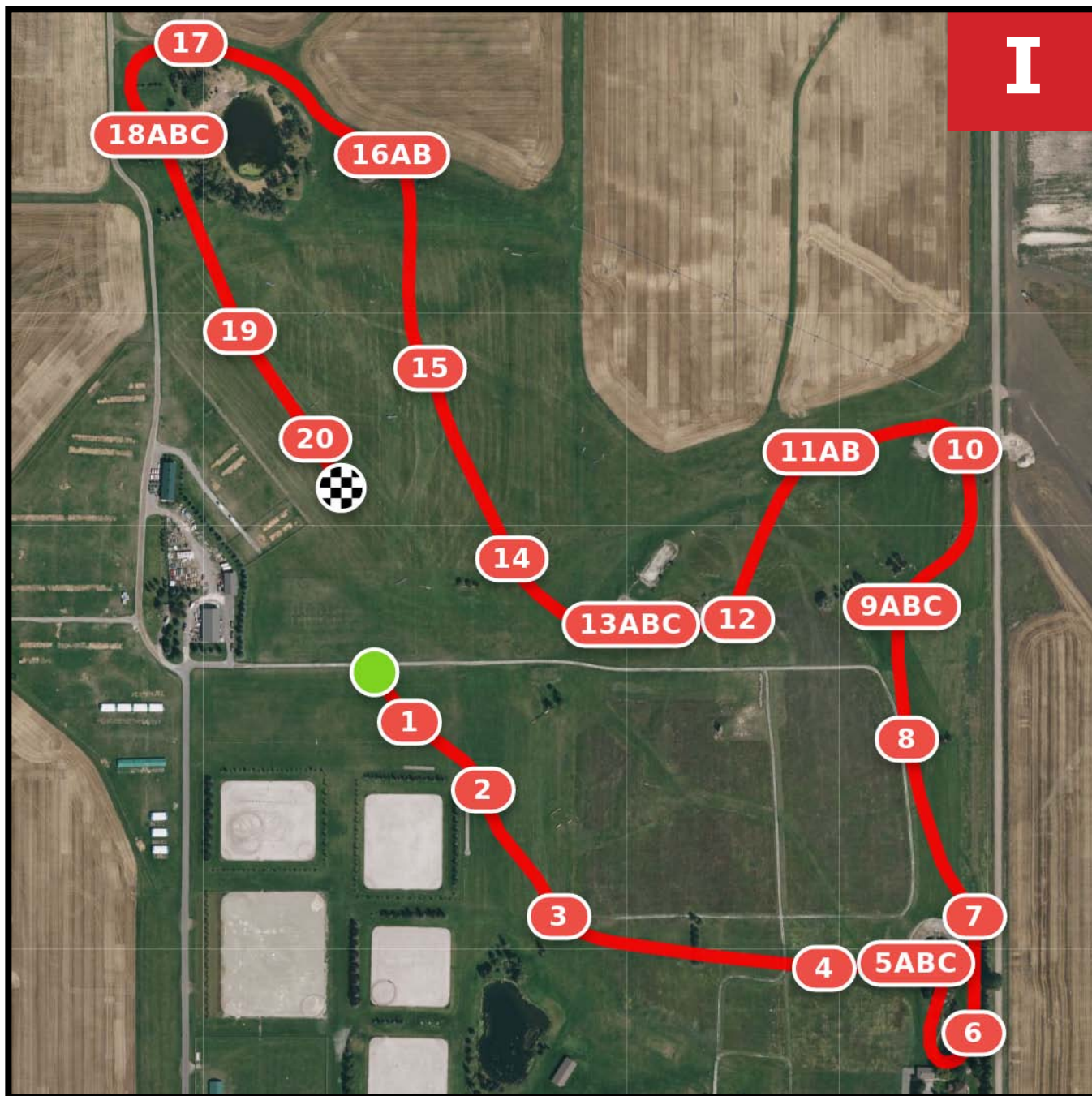


- | | | | |
|------|---------------------|-------|-----------------------------|
| 1 | Train | 12 | Water Pipe |
| 2 | Canadian Flag Ramp | 13ab | Offset Viaducts |
| 3ab | Log Pile to Brush | 14 | Roller Coaster Steps |
| 4 | Wagon | 15abc | Sunken Road |
| 5 | Mulch Oxer | 16 | Table |
| 6ab | Gator to Gator Bait | 17ab | Sweat Lodges |
| 7 | Hanging Log | 18 | Trakehner |
| 8 | Honey Bear Table | 19ab | Smiley Brush to Hedge Table |
| 9abc | Coffin | 20 | Narrow Table |
| 10 | Table | 21 | Brush Oxer |
| 11ab | Corners | 22 | Farm Truck |

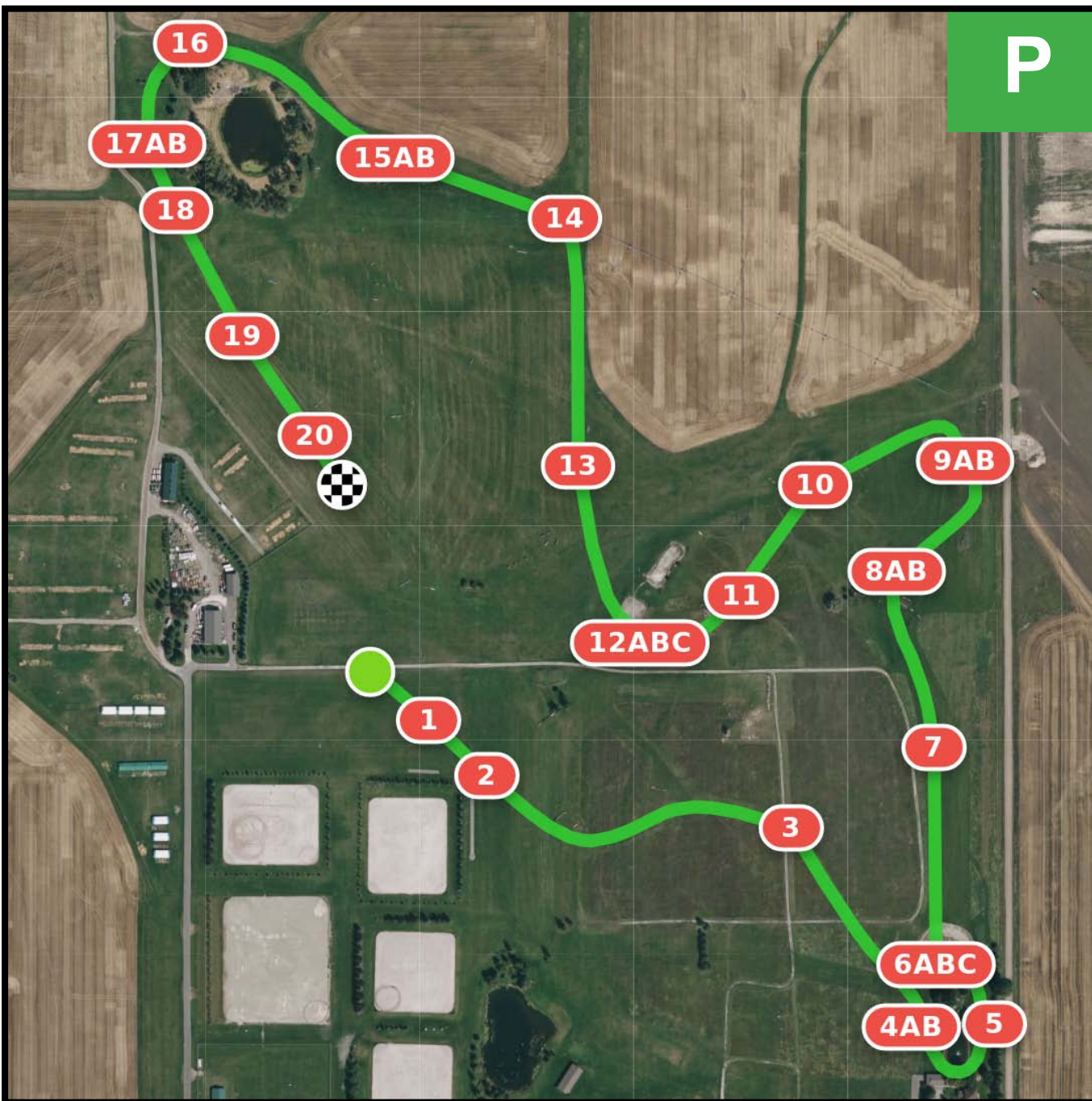


- 1 Train
- 2 Ramp
- 3 Wagon
- 4 Mulch Oxer
- 5abc Hanging Log, Crawfish to Brush
- 6 Honey Bear Table
- 7abc Coffin
- 8 Saloon
- 9ab Brush Corners
- 10 Montana Rockhenge
- 11ab Brush Drop to Fish

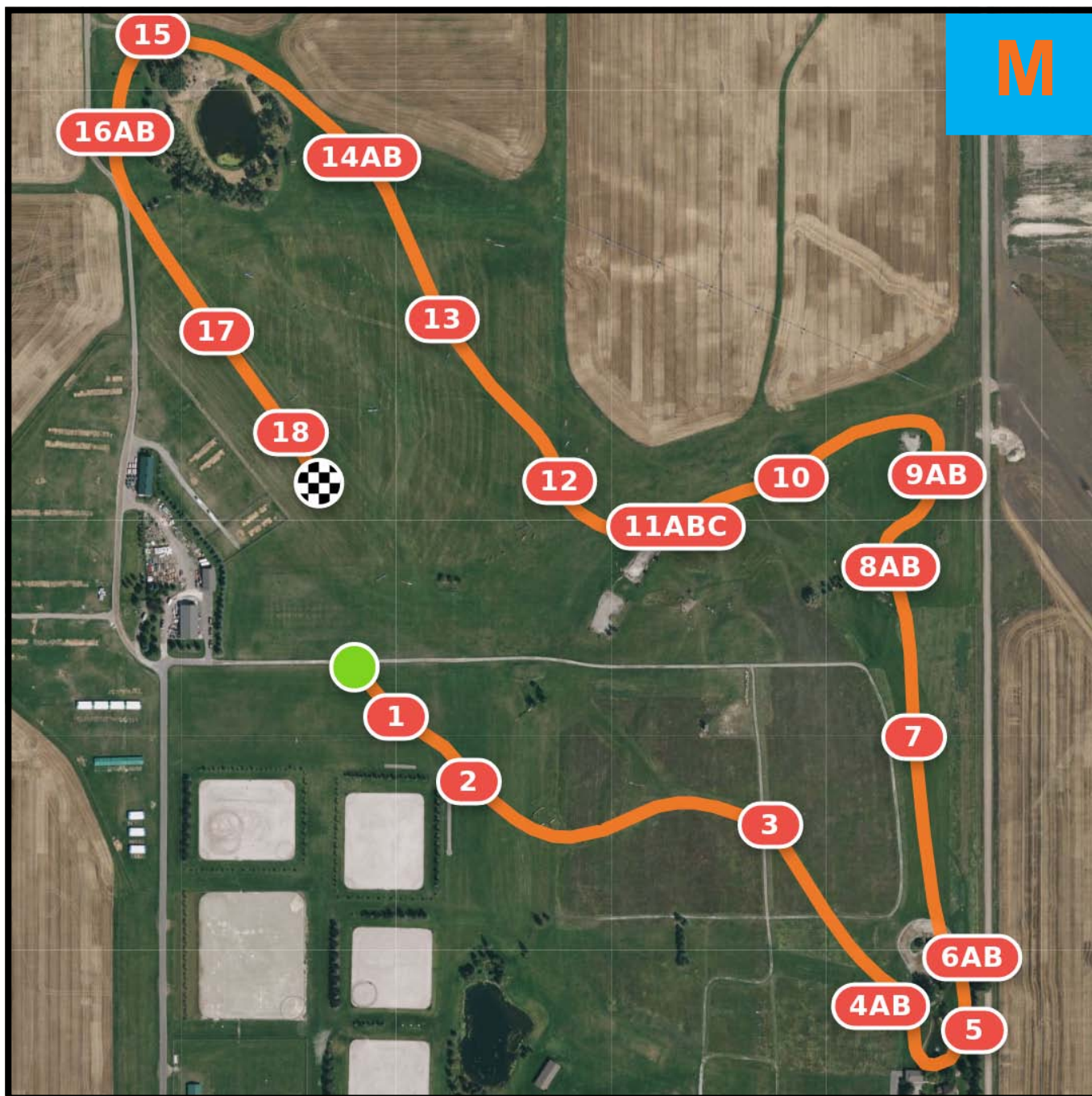
- 12 Tractor
- 13 Table
- 14 Brush Table
- 15abc Up Bank, Hanging Log to Narrow Box
- 16 Narrow Brush Oxer
- 17 Ditch Brush
- 18 Hanging Rail
- 19ab Brush to Hedge Table
- 20 Brush Table
- 21 Bunker



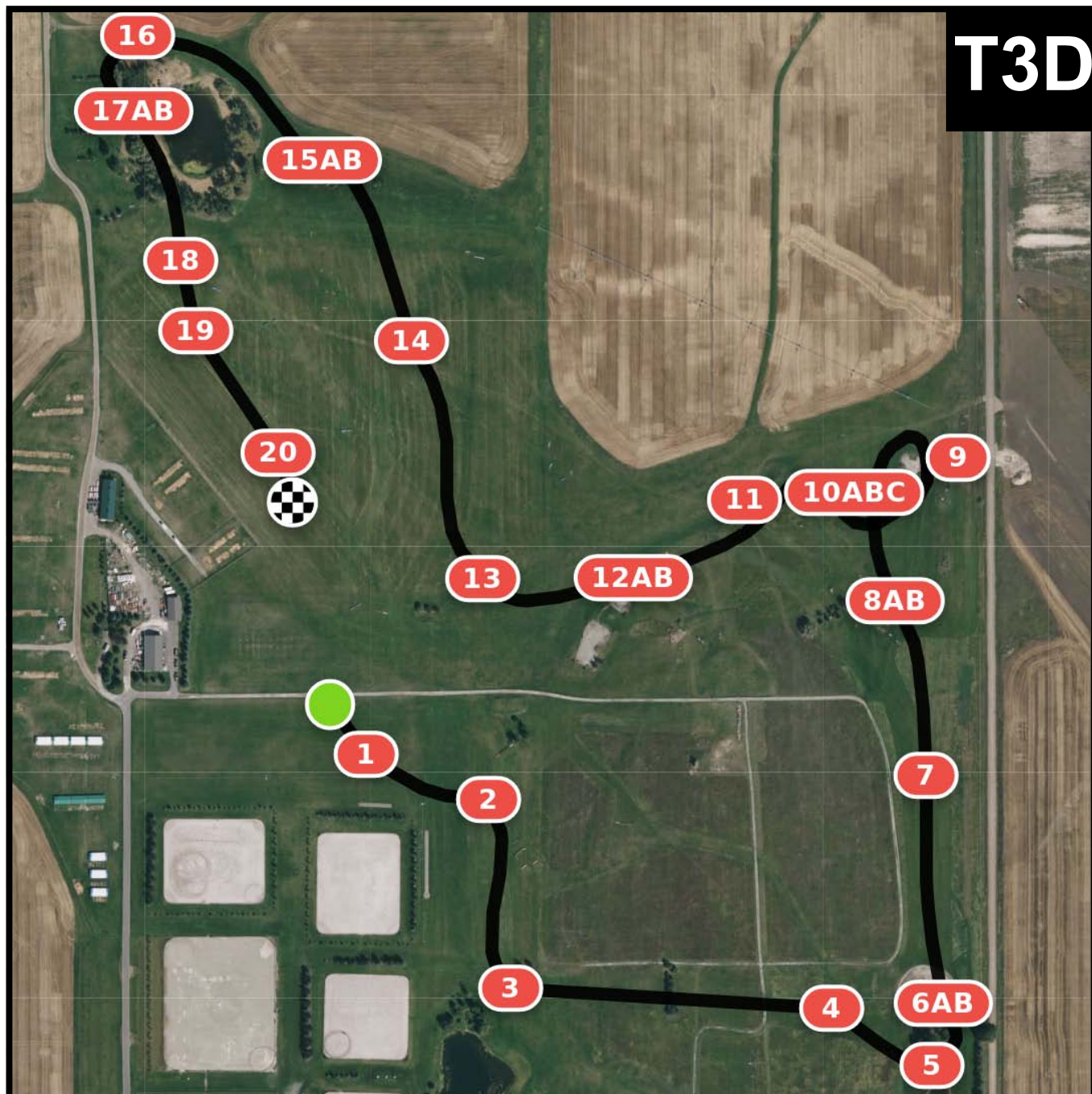
- | | | | |
|------|------------------------|-------|---|
| 1 | Train | 12 | Montana Rockhenge |
| 2 | Ramp | 13abc | Brush Drop into Water, Roller Coaster to Whack-a-Mole |
| 3 | Wagon | 14 | Cabin |
| 4 | Mulch Oxer | 15 | Table |
| 5abc | Gator, Drop to Tabasco | 16ab | Sweat Lodges |
| 6 | Hammock | 17 | North 40 Table |
| 7 | Hanging Rail | 18abc | Fort, Tent to Cannon |
| 8 | Honey Bear Table | 19 | Brush Oxer |
| 9abc | Coffin | 20 | Farm Truck |
| 10 | Cowboy Hat | | |
| 11ab | Brush Corners | | |



- | | | | |
|------|---------------------------------------|-------|-------------------------|
| 1 | Train | 11 | Montana Rockhenge |
| 2 | Ramp | 12abc | Dinosaur, Drop to Fish |
| 3 | Table | 13 | Tractor |
| 4ab | Benches | 14 | Table |
| 5 | Picnic Table | 15ab | Narrow Feeder to Corner |
| 6abc | Hanging Log, Fish Roll Top to Chevron | 16 | Mulch Table |
| 7 | Honey Bear Table | 17ab | Tent to Pistol |
| 8ab | Cabins in the Woods | 18 | Trakehner |
| 9ab | Mine Shaft to Saloon | 19 | Brush Table |
| 10 | Double Scalloped Steeplechase | 20 | Bunker |

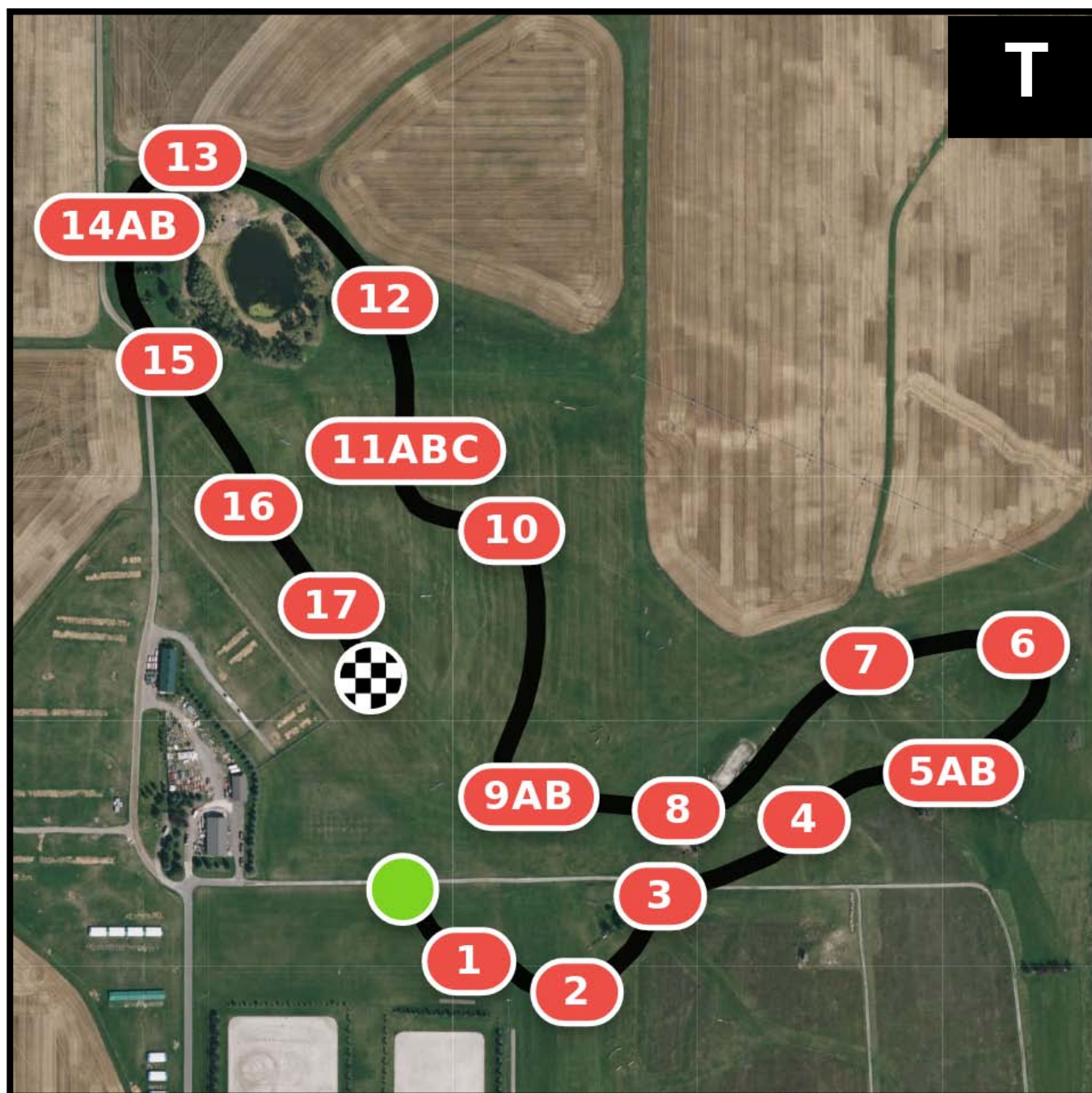


- | | | | |
|-----|-------------------------|-------|------------------------|
| 1 | Train | 10 | Double Scalloped Chase |
| 2 | Ramp | 11abc | Dinos to Corner |
| 3 | Table | 12 | Sled |
| 4ab | Benches | 13 | Blue Stepped Coop |
| 5 | Picnic Table | 14ab | Canoe to Chevron |
| 6ab | Gator Truck to Fish | 15 | Mulch Table |
| 7 | Honey Bear Table | 16ab | Tent to Campfire |
| 8ab | Cabins in the Woods | 17 | Brush |
| 9ab | Miner's Shack to Saloon | 18 | Bunker |



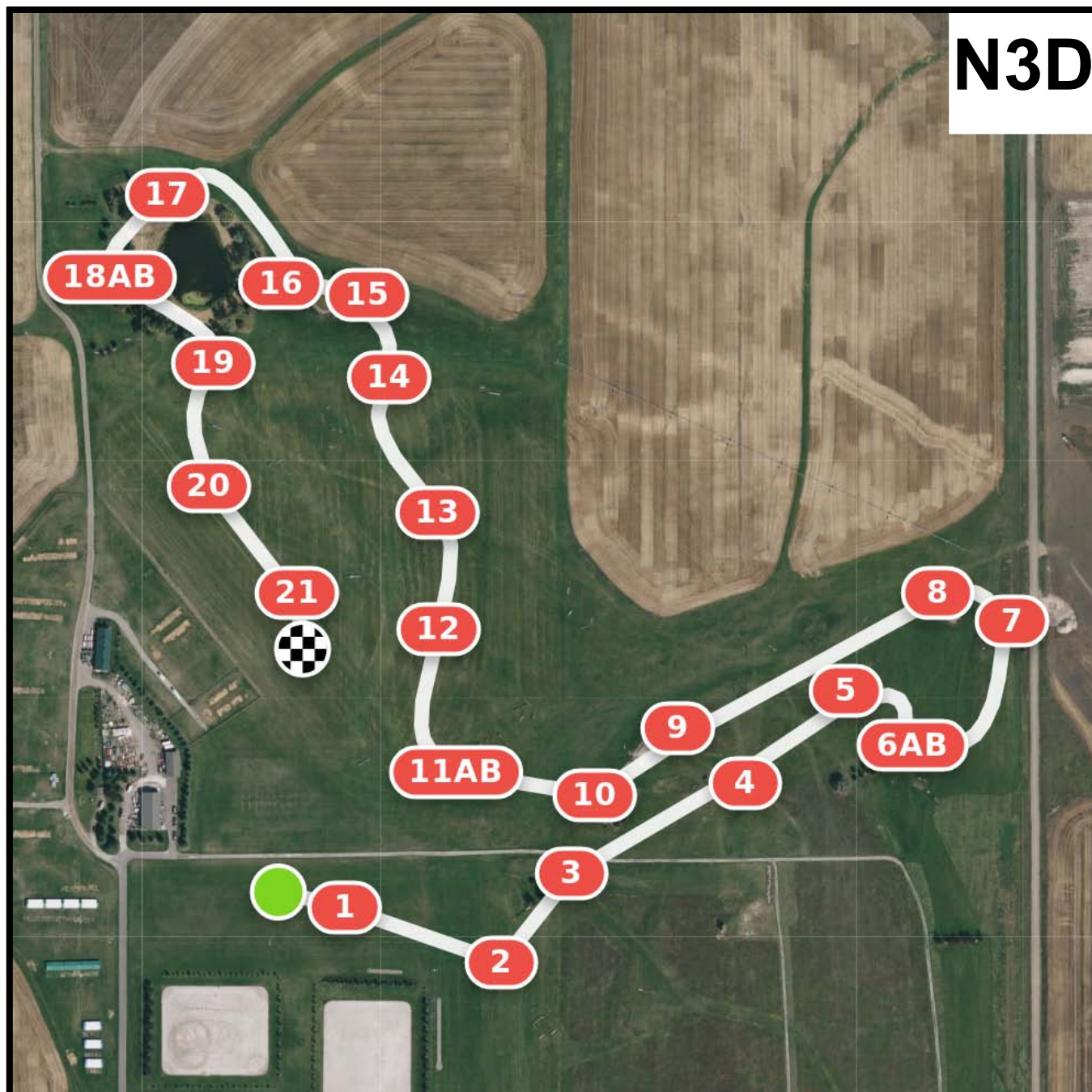
- | | | | |
|-------|---------------------|------|-----------------------|
| 1 | Train | 11 | Black Brush Table |
| 2 | Ramp | 12ab | Beaver Log to Corner |
| 3 | Wagon | 13 | Cabin |
| 4 | Mulch Oxer | 14 | Steeplechase |
| 5 | Ogopogo | 15ab | Bear Rail to Chevron |
| 6ab | Gator Truck to Fish | 16 | Mulch Table |
| 7 | Honey Bear Table | 17ab | Wagon to Calvary Tent |
| 8ab | Cabins in the Woods | 18 | Hunting Hounds |
| 9 | Stage Steps | 19 | Ramp |
| 10abc | Coffin | 20 | Bunker |

T



- | | | | |
|-----|---------------------|-------|---------------------|
| 1 | Train | 10 | Step Coop |
| 2 | Ramp | 11abc | Coffin |
| 3 | Table | 12 | Chevron |
| 4 | Montana Rockhenge | 13 | Mulch Table |
| 5ab | Red Roof Cabins | 14ab | Fort to Saddle Rack |
| 6 | Big Sky Country | 15 | Trakehner |
| 7 | Black Brush Table | 16 | Ramp |
| 8 | Corner Out of Water | 17 | Bunker |
| 9ab | Carrot to Corn | | |

N3D



1 Train Station Bench

2 Ramp

3 Table

4 Log

5 Black Roll Top

6ab Cabins in the Woods

7 Brush

8 Ranch Gate

9 Sunny Table

10 Ogopogito

11ab Carrot to Hot Dog

12 Table

13 Stepped Coop

14 Petroglyph Log

15 Bird Log

16 Corner

17 Roll Top

18ab Cavalry Camp

19 Vision Log

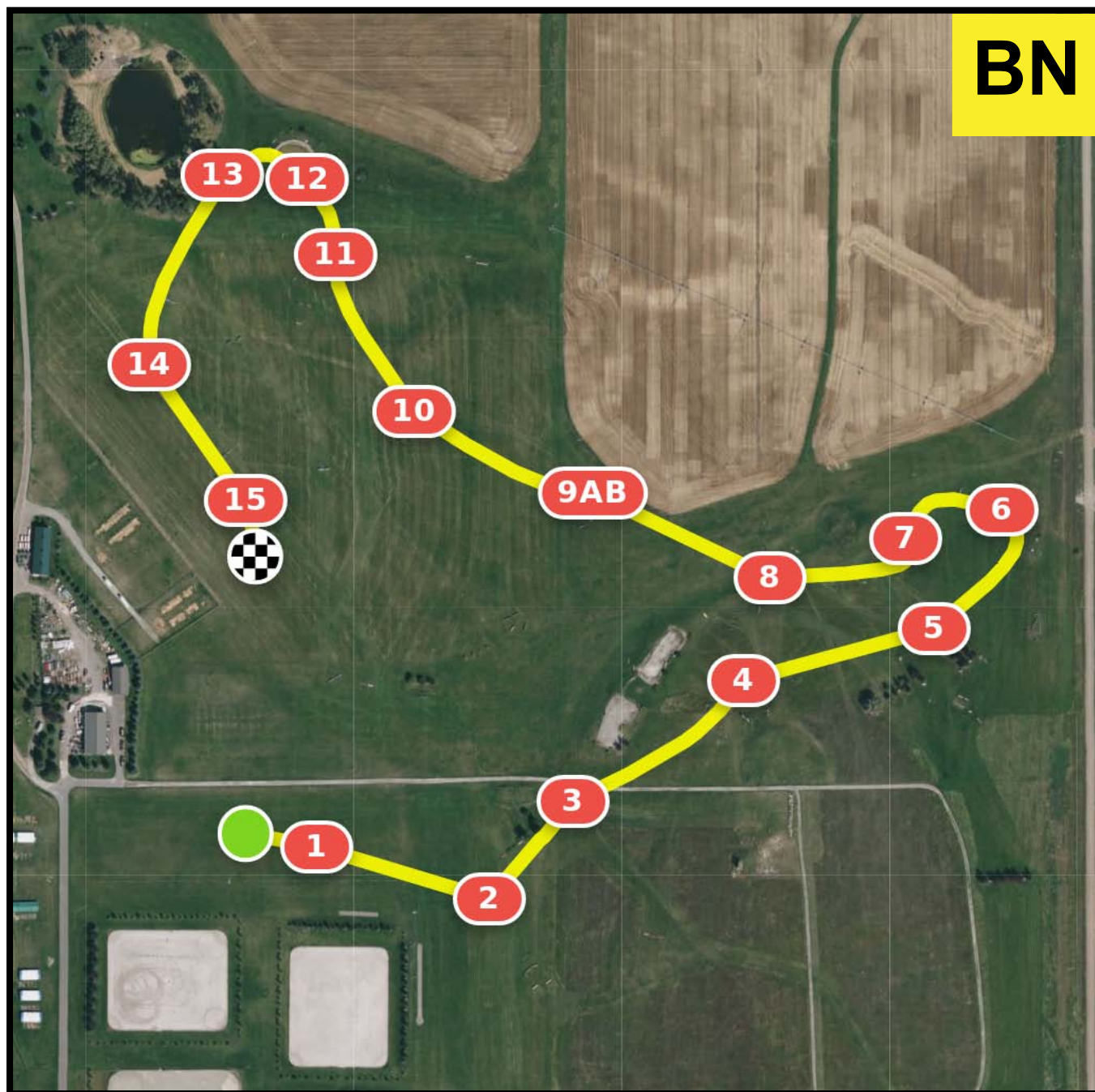
20 Mulch Ramp

21 Table



- | | | | |
|-----|------------------------------|------|--------------|
| 1 | Train Station Bench | 9 | Step Coop |
| 2 | Ramp | 10ab | Coffin |
| 3 | Table | 11 | Corner |
| 4 | Log | 12 | Bench |
| 5 | Black Roll Top | 13 | Fort |
| 6 | Western Water | 14 | Cavalry Ramp |
| 7 | Table | 15 | Trakehner |
| 8ab | Little Houses on the Prairie | 16 | Mulch Ramp |
| | | 17 | Table |

BN



- | | | | |
|---|-----------------|-----|---------------|
| 1 | Log | 9ab | Cabins |
| 2 | Ramp | 10 | Step Coop |
| 3 | Table | 11 | Blue Roll Top |
| 4 | Log | 12 | Log |
| 5 | Flower Coop | 13 | Corner |
| 6 | Western Water | 14 | Steeplechase |
| 7 | Ditch | 15 | Bunker |
| 8 | Yellow Roll Top | | |

2023 OFFICIALS

Patricia Clifton
FEI TECHNICAL DELEGATE

Andrew Temkin
FEI ASSISTANT TECHNICAL DELEGATE

Karen Winn
FEI ASSISTANT TECHNICAL DELEGATE

Bobby Stevenson
FEI PRESIDENT OF GROUND JURY

Sue Baxter
Gretchen Butts
FEI GROUND JURY

Debbie Adams
FEI PRESIDENT OF GROUND JURY

Bea Digrazia
FEI GROUND JURY

Janis Stephens
CHIEF FEI STEWARD

Fran McAvity
Mary Ellen Miller
Karlene Khor
Victoria Lewis
Fran Cross
FEI ASSISTANT STEWARD

Laura Werner
FEI VET

Emily Sandler
FEI ASSOCIATE VET

Katelynn Pierce
Sarah Escaro
FEI APPRENTICE VET

Cindy Deporter
NATIONAL TECHNICAL DELEGATE

Ashley Johnson
3D NATIONAL ASSISTANT TECHNICAL DELEGATE

Vicky Stachuk Matisi
PRESIDENT GROUND JURY

Michelle Henry
HT JURY

Amanda Wilgenburg
DRESSAGE JUDGE

Deeda Randle
3D PRESIDENT

Christel Carlson
3D JURY

Louis Blankenship
Joe Carbonari
Malcolm Hook
ANNOUNCERS

Scoring Chix and Roosters
SCORING

Diane Pitts
Cyndi Kurth
CONTROL

Chris Barnard
SHOW JUMPING DESIGNER

Roger Chick
WARM UP STEWARD

Ian Stark
FEI XC DESIGNER

JM Durr
FEI XC ASSISTANT DESIGNER

Bert Wood
NATIONAL XC COURSE DESIGNER

Max Corcoran
Diane Pitts
THREE DAY EDUCATION



AWARDS

Ribbons to 10th
Stall Plaques to 3rd

Rebecca Farm embroidered
Tempest Original Tech Coolers,
donated by Shires Equestrian Products

Rebecca Farm Grooming Box

Professional's Choice Ice Boots,
donated by Gallops Saddlery

\$190 CWD Gift Certificates

Gallops Gift Certificate

scrubEaze and Flip-mex donated by Scoring Chix

PRIZE MONEY

CCI4*-L - \$30,000

CCI4*-S - \$6,000

CCI3*-L - \$6,000

CCI3*-S - \$5,000

CCI2*-L - \$5,000

Intermediate - \$700

Preliminary - \$500

Modified - \$400

Training - \$400

Novice - \$300

Beginner Novice - \$200

Classic Three-Day - \$700

SPECIAL AWARDS

PHYLLIS FREEMAN GREENE MEMORIAL GOOD SEAT & HANDS AWARD

Donated by Laurie Baldwin

Determined by vote of the Judges
Dress Sheet Awarded to Rider who exhibits
the Most Classical & Effective Seat

Dress Sheet Awarded to
Best Scoring Dressage in
Junior Training & Junior Novice

TS MAXWELL TROPHY

Perpetual Trophy and Leather Halter
Donated by Kathy Arrandale and Family
in honor of TS Maxwell,
owned by Jane Clapp of Polson.
Awarded to the top placed
Preliminary level Thoroughbred.

GUINNESS PERPETUAL TROPHY

Prize Money of \$500

Awarded to the highest placed Young Rider in
memory of Sarah Broussard's horse Guinness

CYNTHIA JANE BURGE TROPHY

Crystal Perpetual Trophy

Awarded to the Highest Placed Trainer/Rider.

KAZAR OLD GUYS RULE AWARD

\$500 donated by Kathi Michel

Awarded to the oldest Novice horse that
finishes on their dressage score.

BEST PRESENTATION

IN NOVICE THREE-DAY/TRAINING THREE-DAY

Awarded to the best presented
horse/rider combination.



A WORLD CLASS EQUESTRIAN TRIATHLON
DRESSAGE • CROSS COUNTRY • SHOW JUMPING •
JULY 19 - 23, 2023

FREE ADMISSION • 4-DAY TRADE FAIR
PRESENTED BY MONTANA EQUESTRIAN EVENTS, INC.

1010 West Springcreek Rd. Kalispell, MT
www.rebeccafarm.org

