



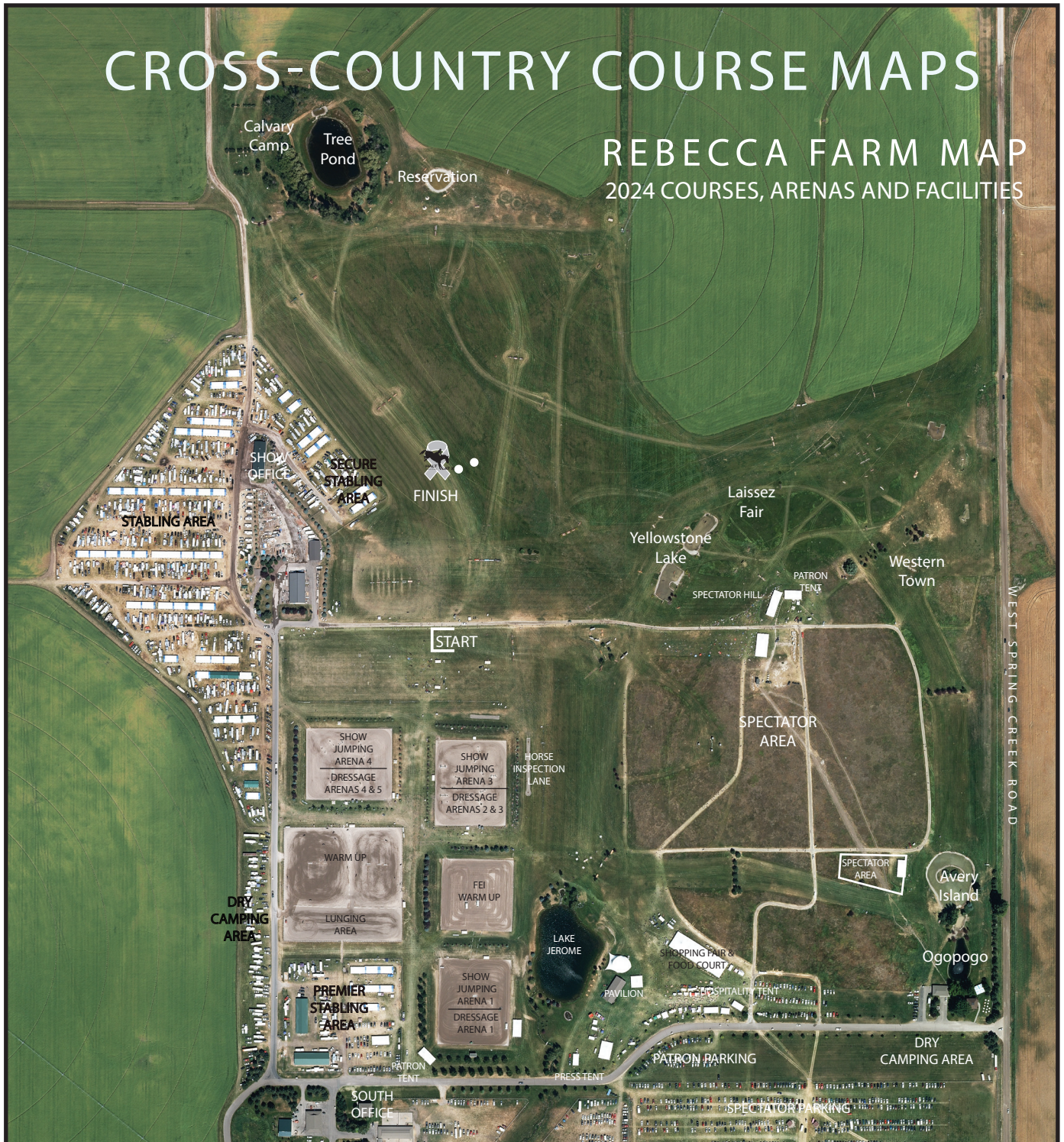
THE EVENT

AT REBECCA FARM

CROSS-COUNTRY COURSE MAPS

REBECCA FARM MAP

2024 COURSES, ARENAS AND FACILITIES



4*L

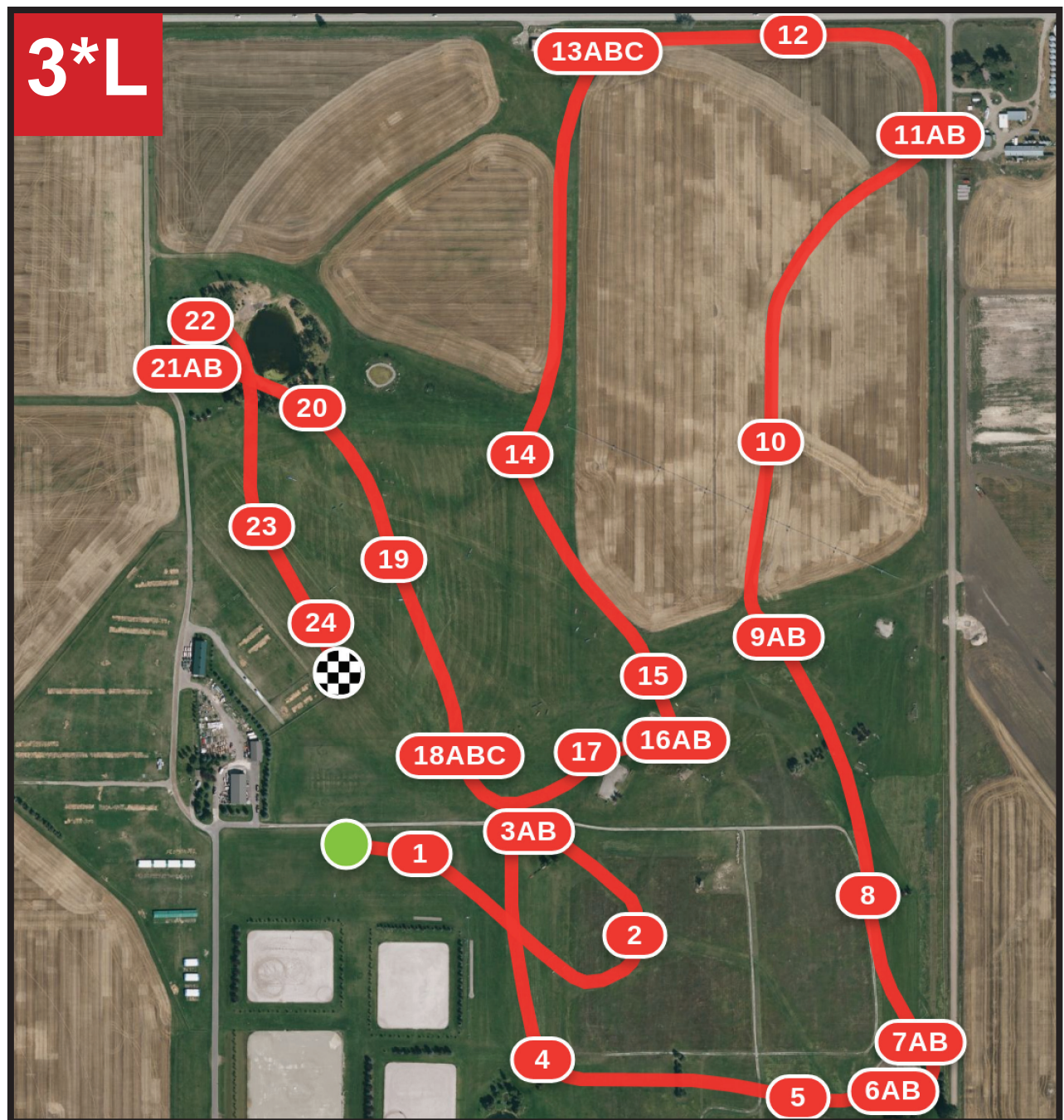


- | | | | |
|-------|------------------------------------|--------|-----------------------------------|
| 1 | Train | 13 | Lincoln Logs |
| 2 | Ramp | 14abc | Coffin |
| 3ab | Log Pile to Brush | 15 | Ditch Brush |
| 4 | Wagon | 16 | Blue Cottage |
| 5 | Mulch Oxer | 17abcd | Moose Bounces |
| 6abcd | Snake, Bounce Logs to Triple Brush | 18 | Table |
| 7ab | Narrow Table to Honey Bear Table | 19ab | Barns |
| 8ab | Brush Corners | 20 | Multch Table |
| 9 | Water Pipe | 21 | Fort |
| 10ab | Viaducts | 22abc | Duck, Duck Rail to Rolled Chevron |
| 11 | Brush Oxer | 23 | Brush Oxer |
| 12ab | Brush Oxer to Corner | 24 | Farm Trailer |



4*S

- | | | | |
|------|---------------------------------|-------|-----------------------------------|
| 1 | Train | 11 | Water Pipe |
| 2 | Ramp | 12ab | Brush to Hat |
| 3ab | Log Pile to Brush | 13 | Brush Oxer |
| 4 | Wagon | 14ab | Brush Oxer to Corner |
| 5 | Mulch Oxer | 15 | Lincoln Logs |
| 6ab | Gator to Gator Bait | 16abc | Coffin |
| 7ab | Angled Brush to Triple Brush | 17 | Roll Top |
| 8ab | Narrow Table to Honeybear Table | 18 | Skinny Brush Oxer |
| 9 | Roll Feeder | 19abc | Duck, Duck Rail to Rolled Chevron |
| 10ab | Brush Corners | 20 | Brush Oxer |
| | | 21 | Farm Trailer |

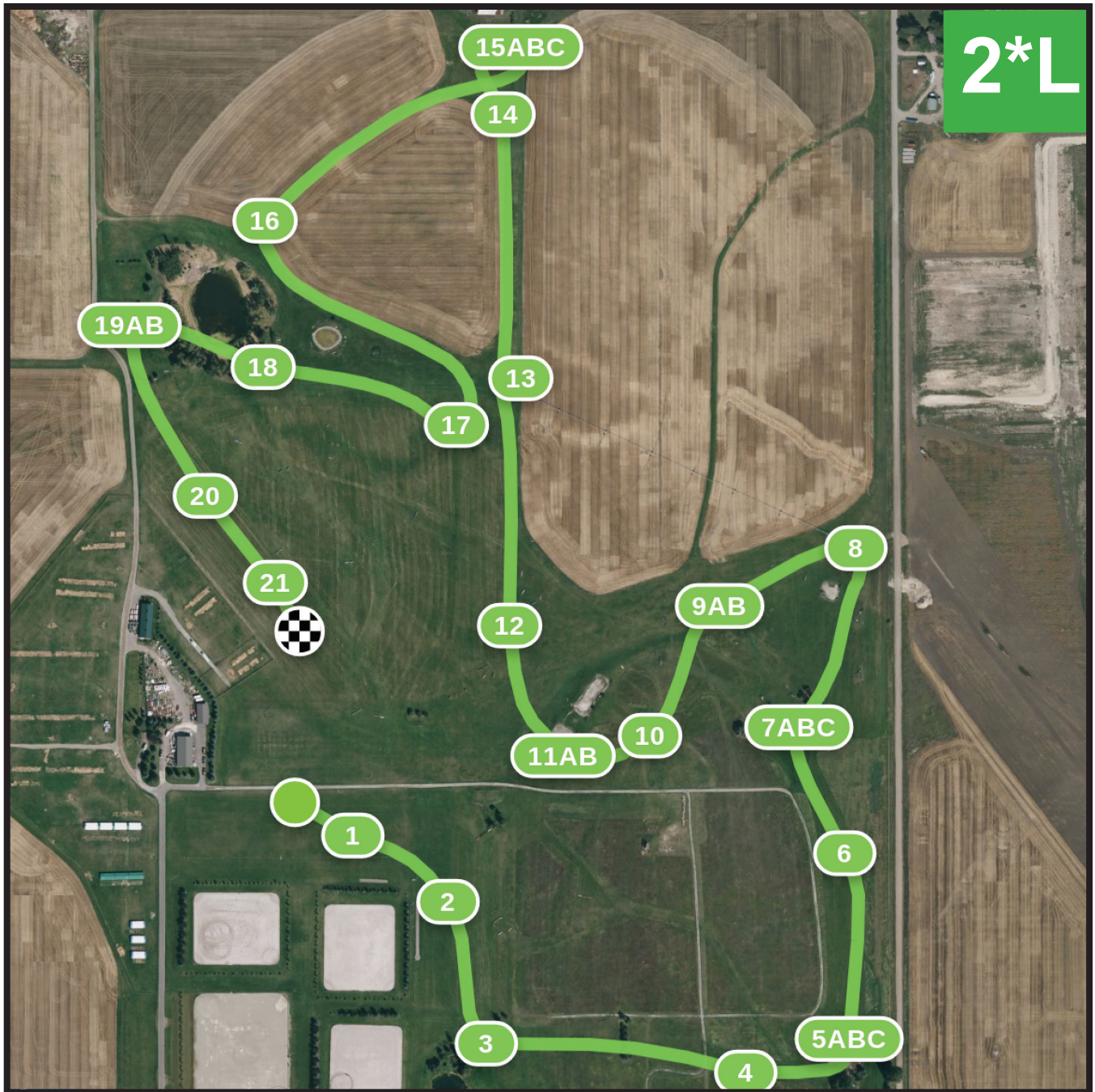


- | | | | |
|------|----------------------|-------|-----------------------------|
| 1 | Train | 13abc | Coffin |
| 2 | Ramp | 14 | Narrow Ditch Brush |
| 3ab | Log Pile to Brush | 15 | Fruit Stand |
| 4 | Wagon | 16ab | Trakehner to Brick House |
| 5 | Mulch Oxer | 17 | Viaduct |
| 6ab | Gator to Gator Bait | 18abc | Sunken Road |
| 7ab | Brush to Chevron | 19 | Table |
| 8 | Honey Bear Table | 20 | Hanging Log |
| 9ab | Brush Corners | 21ab | Smiley Brush to Hedge Table |
| 10 | Brush Oxer | 22 | Narrow Table |
| 11ab | Brush Oxer to Corner | 23 | Brush Oxer |
| 12 | Lincoln Logs | 24 | Farm Truck |



- | | | | |
|------|---------------------|-------|-----------------------------|
| 1 | Train | 12 | Water Pipe |
| 2 | Ramp | 13ab | Brick Houses |
| 3ab | Log Pile to Brush | 14 | Roller Coaster Steps |
| 4 | Wagon | 15abc | Sunken Road |
| 5 | Mulch Oxer | 16 | Table |
| 6ab | Gator to Gator Bait | 17ab | Sweat Lodges |
| 7 | Brush Off Berm | 18 | Hanging Log |
| 8 | Honey Bear Table | 19ab | Smiley Brush to Hedge Table |
| 9abc | Coffin | 20 | Narrow Table |
| 10 | Table | 21 | Brush Oxer |
| 11ab | Corners | 22 | Farm Truck |

2*L



- | | | | |
|------|--------------------------|-------|------------------------------------|
| 1 | Train | 12 | Tractor |
| 2 | Ramp | 13 | Table |
| 3 | Wagon | 14 | Picnic Table |
| 4 | Mulch Oxer | 15abc | Up Bank, Hanging Log to Narrow Box |
| 5abc | Canoe, Crawfish to Brush | 16 | Tabled Oxer |
| 6 | Honey Bear Table | 17 | Ditch Brush |
| 7abc | Coffin | 18 | Hanging Rail |
| 8 | Slab Table | 19ab | Brush to Hedge Table |
| 9ab | Corners | 20 | Brush Table |
| 10 | Montana Rockhenge | 21 | Bunker |
| 11ab | Drop to Fish | | |

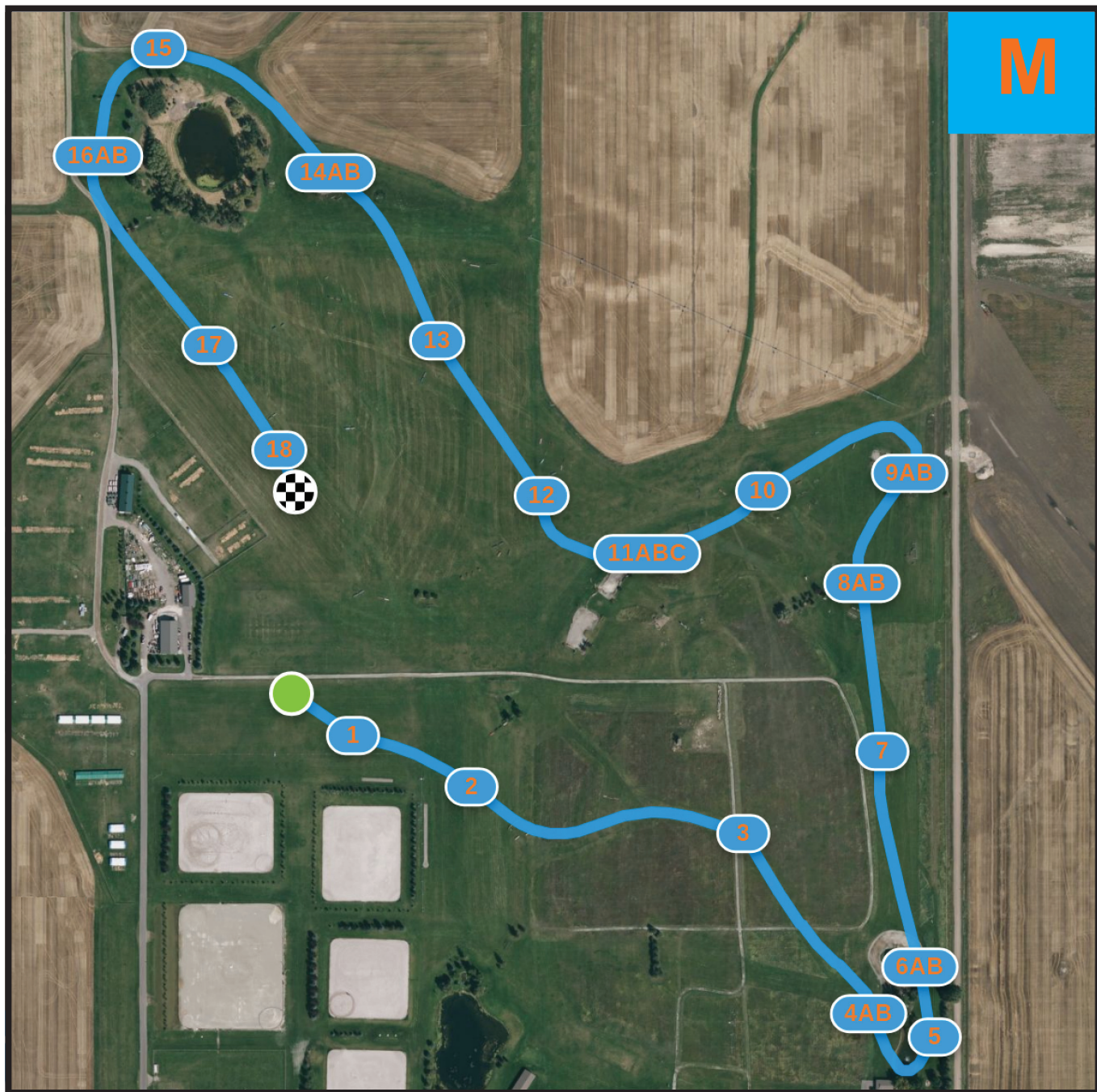


- | | | | |
|------|------------------------|-------|---|
| 1 | Train | 12 | Montana Rockhenge |
| 2 | Ramp | 13abc | Drop into Water, Whack-a-Mole to Roller Coaster |
| 3 | Wagon | 14 | Cabin |
| 4 | Mulch Oxer | 15 | Table |
| 5abc | Cabin, Drop to Tabasco | 16ab | Sweat Lodges |
| 6 | Hammock | 17 | North 40 Table |
| 7 | Brush off Berm | 18abc | Fort, Tent to Cannon |
| 8 | Honey Bear Table | 19 | Brush Oxer |
| 9abc | Coffin | 20 | Farm Truck |
| 10 | Picnic Table | | |
| 11ab | Corners | | |



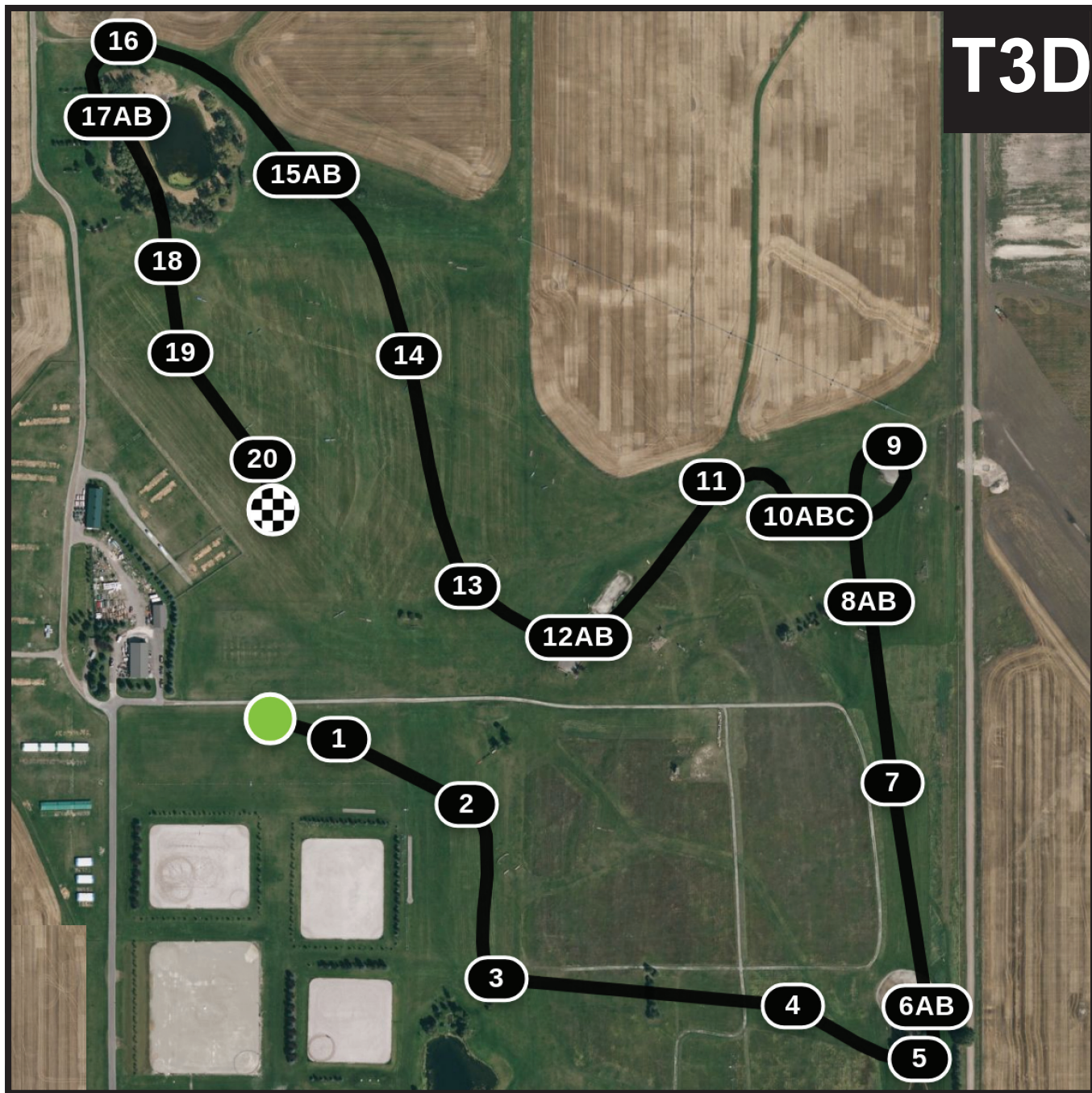
- 1 Train
- 2 Ramp
- 3 Table
- 4ab Roll Top to Chicken Coop
- 5 Picnic Table
- 6abc Hanging Log, Cabin to Chevron
- 7 Honey Bear Table
- 8ab Cabins in the Woods
- 9ab Mine Shaft to Saloon
- 10 Brush

- 11 Montana Rockhenge
- 12abc Dinosaur, Drop to Fish
- 13 Tractor
- 14 Table
- 15ab Narrow Feeder to Corner
- 16 Mulch Table
- 17ab Tent to Pistol
- 18 Trakehner
- 19 Brush Table
- 20 Bunker



- 1 Train
- 2 Ramp
- 3 Table
- 4ab Roll Top to Chicken Coop
- 5 Picnic Table
- 6ab Gator Truck to Ogopogo
- 7 Honey Bear Table
- 8ab Cabins in the Woods
- 9ab Bench to Saloon

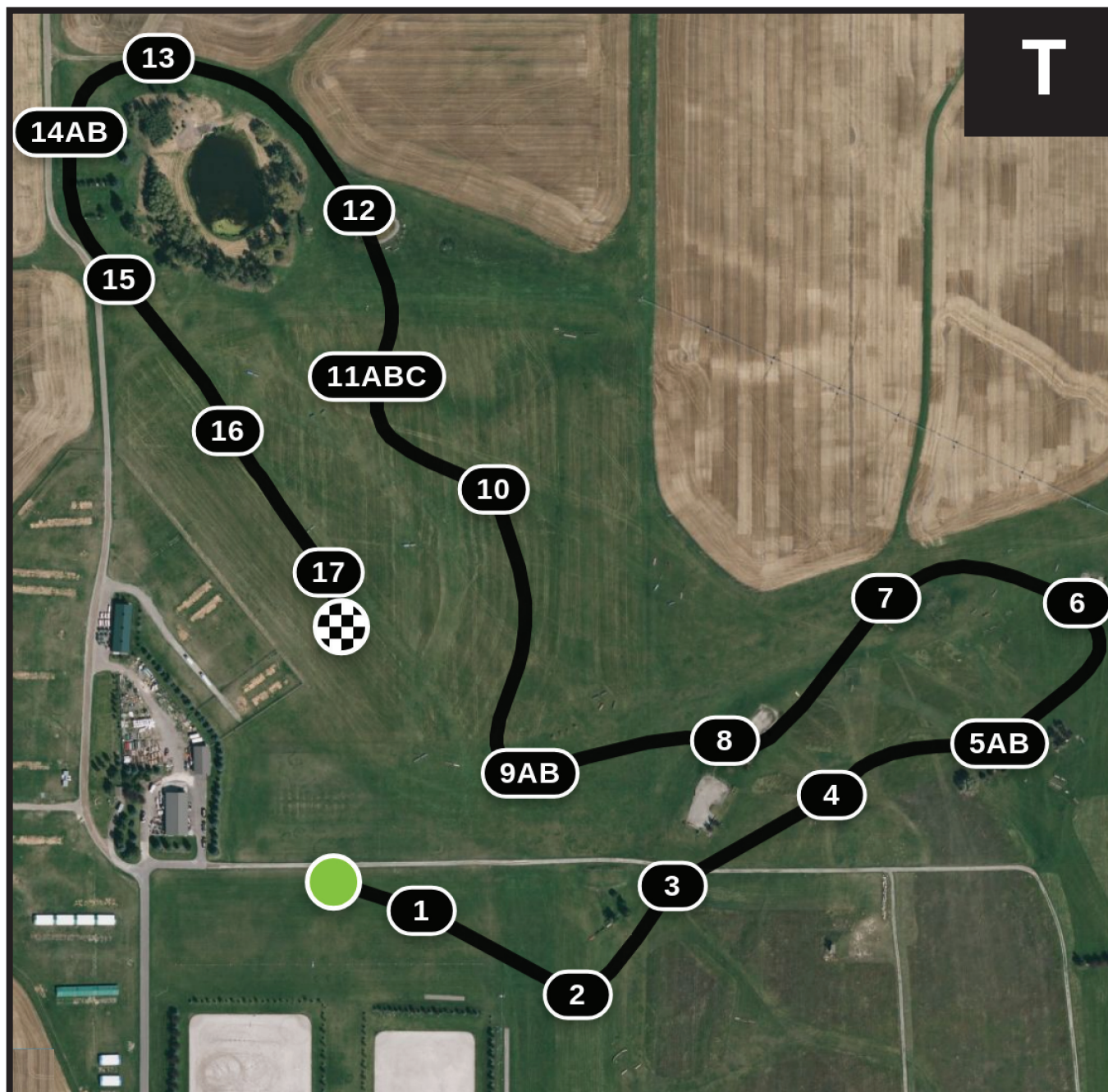
- 10 Brush
- 11abc Dinos to Corner
- 12 Tractor Sled
- 13 Blue Stepped Coop
- 14ab Canoe to Chevron
- 15 Mountain Table
- 16ab Tent to Campfire Log
- 17 Ramp
- 18 Bunker



- 1 Train
- 2 Ramp
- 3 Wagon
- 4 Tabled Oxer
- 5 Fish
- 6ab Gator Truck to Ogopogo
- 7 Honey Bear Table
- 8ab Cabins in the Woods
- 9 Stage Steps
- 10abc Coffin

- 11 Brush Oxer
- 12ab Beaver Log to Corner
- 13 Cabin
- 14 Brush
- 15ab Bear Rail to Chevron
- 16 Mountain Table
- 17ab Wagon to Calvary Tent
- 18 Hunting Hounds
- 19 Ramp
- 20 Bunker

T

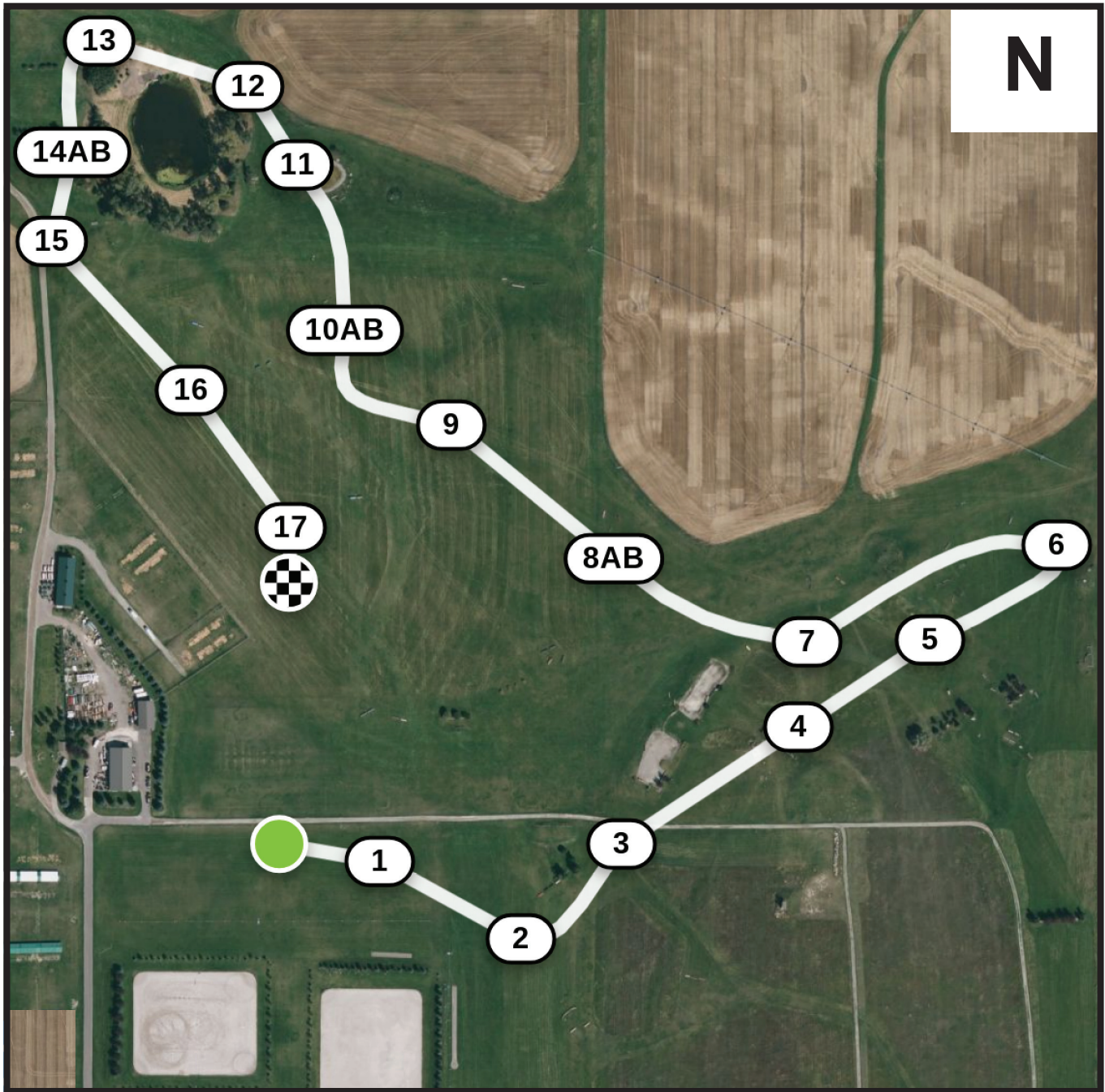


- | | | | |
|-----|---------------------|-------|---------------------|
| 1 | Train | 10 | Step Coop |
| 2 | Ramp | 11abc | Coffin |
| 3 | Table | 12 | Chevron |
| 4 | Montana Rockhenge | 13 | Mountain Table |
| 5ab | Red Roof Cabins | 14ab | Fort to Saddle Rack |
| 6 | Big Sky Country | 15 | Trakehner |
| 7 | Brush Oxer | 16 | Ramp |
| 8 | Corner Out of Water | 17 | Bunker |
| 9ab | Corn to Carrot | | |

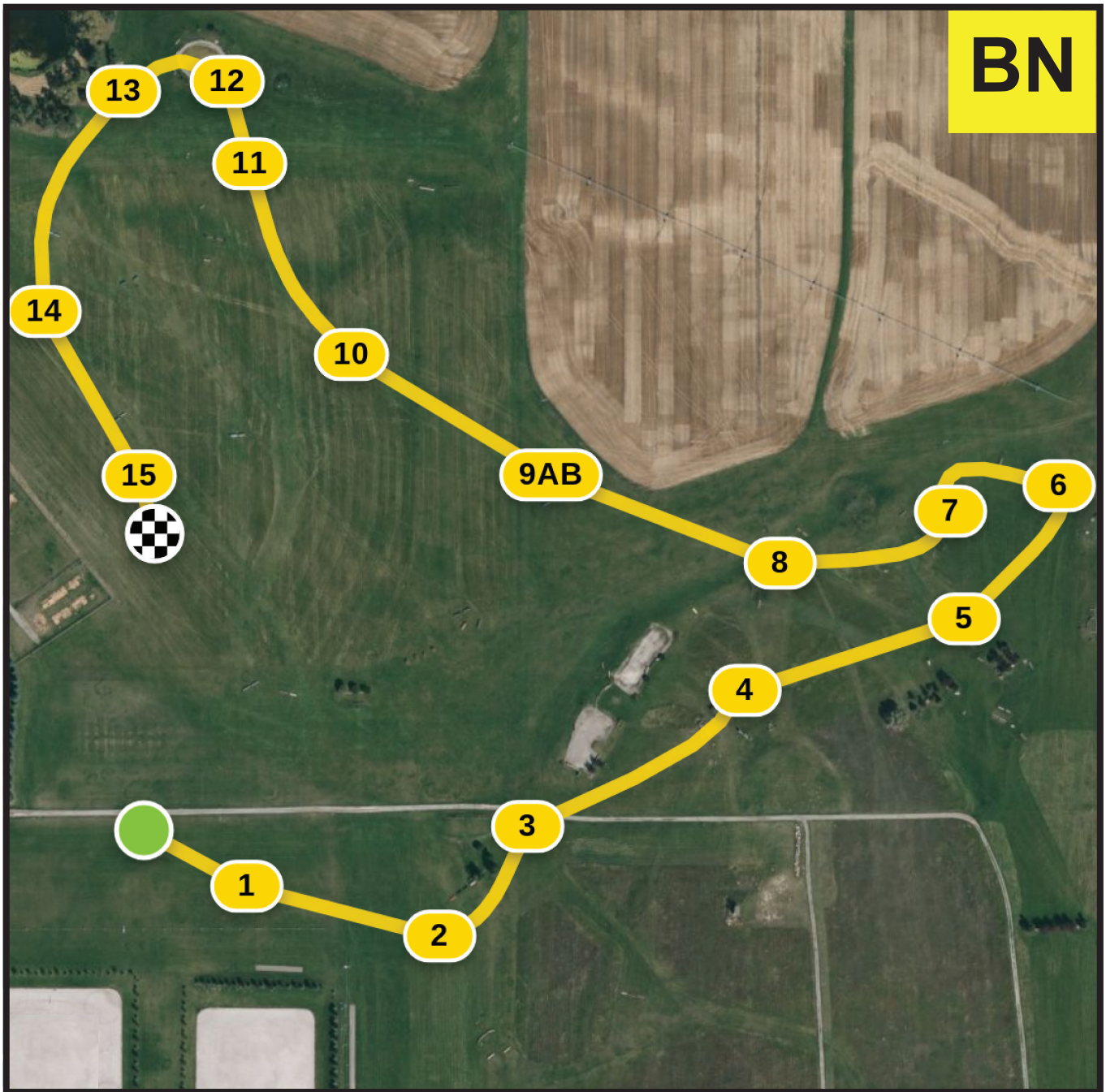


N3D

- | | | | |
|------|-----------------------------|------|-------------------|
| 1 | Train Station Bench | 11ab | Hot Dog to Carrot |
| 2 | Ramp | 12 | Stepped Coop |
| 3 | Table | 13 | Petroglyph Log |
| 4 | Log | 14 | Bird Log |
| 5 | Black Roll Top | 15 | Corner |
| 6ab | Cabins | 16 | Roll Top |
| 7 | Palisade | 17ab | Cavalry Camp |
| 8 | Ranch Gate | 18 | Vision Log |
| 9 | Table | 19 | Ramp |
| 10ab | Creek Crossing to Ogopogito | 20 | Bunker |



- | | | | |
|-----|------------------------------|------|--------------|
| 1 | Train Station Bench | 9 | Step Coop |
| 2 | Ramp | 10ab | Coffin |
| 3 | Table | 11 | Corner |
| 4 | Hanging Log | 12 | Bench |
| 5 | Black Roll Top | 13 | Fort |
| 6 | Western Water | 14ab | Cavalry Ramp |
| 7 | Table | 15 | Trakehner |
| 8ab | Little Houses on the Prairie | 16 | Ramp |
| | | 17 | Bunker |



- 1 Train
- 2 Brush
- 3 Table
- 4 Log
- 5 Coop
- 6 Western Water
- 7 Ditch
- 8 Yellow Roll Top

- 9ab Cabins
- 10 Step Coop
- 11 Blue Roll Top
- 12 Log
- 13 Corner
- 14 Ramp
- 15 Bunker

2024 OFFICIALS

3/4* FEI TECHNICAL DELEGATE

Andrew Temkin

FEI ASSISTANT TECHNICAL DELEGATE

Cindy Deporter

3/4* FEI PRESIDENT OF GROUND JURY

Gretchen Butts

FEI GROUND JURY

Robyn Fisher
Helen Brettell
Sara Miller Leary
Christel Carlson

2* FEI TECHNICAL DELEGATE

Cindy Deporter

FEI ASSISTANT TECHNICAL DELEGATE

Mary Duenow

2* FEI PRESIDENT OF GROUND JURY

Val Vizzcarondo

FEI CHIEF STEWARD

Fran McAvity

FEI ASSISTANT STEWARDS

Dana Diemer
Fran Cross
Mary Ellen Miller
Karlene Khor

VETERINARIAN CONTROL

Emily Sandler

FEI VETERINARIAN

Kris Purcell

FEI ASSOCIATE VETERINARIANS

Catherine Kohn
Jessica Robertson
Katelynn Pierce

NATIONAL TECHNICAL DELEGATE

Sarah Rajoy

ASSISTANT TECHNICAL DELEGATE

Dorothy Hamilton

PRESIDENT GROUND JURY

Ashley Johnson

HT JURY

Dayna Lynn Pugh

DRESSAGE JUDGE

Amy Jablonovsky
Nicki Charbonneau

THREE DAY PRESIDENT

Deeda Randle

THREE DAY JURY

Carol Kozlowski

THREE DAY TECHNICAL DELEGATE

Leslie Threlkeld

ANNOUNCERS

Joe Carbonari
Jonathan Horowitz

CONTROL

Louis Blankenship
Malcolm Hook
Cyndi Kurth

SHOW JUMPING DESIGNER

Chris Barnard

WARM UP STEWARD

Roger Chick

FEI XC DESIGNER

Ian Stark

FEI ASSISTANT XC DESIGNER

Jay Hambly

P, T, N, BN XC COURSE DESIGNER

Bert Wood

INTERMEDIATE XC DESIGNER

Marc Grandia

THREE DAY EDUCATION

Rob Burk

SAFETY OFFICER

Kim Vierra



THE EVENT

AT REBECCA FARM

AWARDS

Ribbons to 8th
Rebecca Farm engraved Silver Plate

Rebecca Farm embroidered
Tempest Original Tech Coolers,
donated by Shires Equestrian Products

Rebecca Farm embroidered
Toklat Tango Supreme Dressage Pad,
donated by Gallops Saddlery

Professional's Choice Ventech Brushing Boots,
donated by Gallops Saddlery

Professional's Choice Scratchless Hay Bag,
donated by Gallops Saddlery

Rebecca Farm embroidered
Equestrian Stockholm Jump Saddle Pads,
donated by We Ride Together

Basket of Equerry's & Farrier's Wife Products,
donated by Animal Health Solutions

PRIZE MONEY

CCI4*-L - \$30,000
CCI4*-S - \$6,000
CCI3*-L - \$6,000
CCI3*-S - \$5,000
CCI2*-L - \$5,000
Intermediate - \$700
Preliminary - \$500
Modified - \$400
Training - \$400
Novice - \$300
Beginner Novice - \$200
Classic Three-Day - \$700

SPECIAL AWARDS

PHYLLIS FREEMAN GREENE MEMORIAL GOOD SEAT & HANDS AWARD

Donated by Laurie Baldwin

Leather Halter Awarded to
Best Scoring Dressage in
Junior Training & Junior Novice

TS MAXWELL TROPHY

Perpetual Trophy and Leather Halter
Donated by Kathy Arrandale and Family
in honor of TS Maxwell,
owned by Jane Clapp of Polson.
Awarded to the top placed
Preliminary level Thoroughbred.

GUINNESS PERPETUAL TROPHY

Prize Money of \$500
Awarded to the highest placed Young Rider in
memory of Sarah Broussard's horse Guinness

CYNTHIA JANE BURGE TROPHY

Crystal Perpetual Trophy
Awarded to the Highest Placed Trainer/Rider.

BEST PRESENTATION IN NOVICE THREE-DAY/TRAINING THREE-DAY

Awarded to the best presented
horse/rider combination.



A WORLD CLASS EQUESTRIAN TRIATHLON
DRESSAGE • CROSS COUNTRY • SHOW JUMPING •
JULY 17 - 21, 2024

FREE ADMISSION • 4-DAY TRADE FAIR
PRESENTED BY MONTANA EQUESTRIAN EVENTS, INC.
1010 West Springcreek Rd. Kalispell, MT
www.rebeccafarm.org

